

NeoRouter for Android

The network revolves around you™

Contents

1. Overview	1
2. Key Advantages	1
3. Quick Start Guide	2
4. About Port Forward	4
1.1 Static Port Forward	5
1.2 Dynamic Port Forward	5

1. Overview

NeoRouter for Android enables users to remotely access and manage Windows, Mac and Linux computers right from your Android phone.

NeoRouter is a cross-platform zero-configuration VPN solution that securely connects your computers and devices at any locations into a virtual LAN and provides a networking platform for various applications like remote desktop, VNC, SSH, etc.

2. Key Advantages

Simplify remote access setup: no need to configure your router to port-forward every remote computer and every application. NeoRouter can traverse NAT and establish direct connection with your computers.

Secure connection: VNC, Telnet, FTP and many other applications do not support encryption. NeoRouter can secure these connections using encryption algorithms that meet the industry’s highest standards.

Support popular remote applications: NeoRouter works well with ConnectBot, SYSE Pocket Cloud and AndFTP. Because NeoRouter supports Port Forward, it can theoretically support any application that uses TCP protocol.

Multiple concurrent sessions: you can open multiple SSH, FTP, VNC and RDP sessions over NeoRouter’s virtual network.

Do not require root: NeoRouter does not require user to root the device. It supports Port Forward and does not use tun/tap drivers like openvpn.

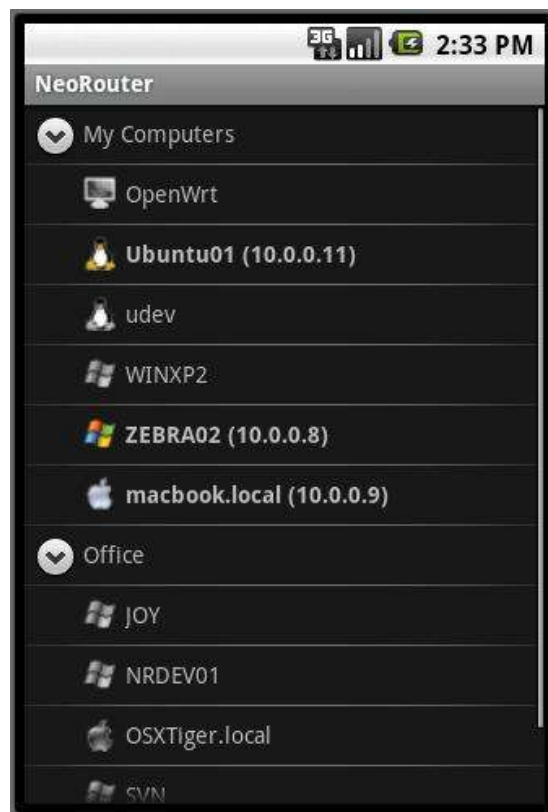
Low memory usage: some remote access applications, like LogMeIn's Ignition, can use up all the memory on your phone. NeoRouter consumes very little memory and works well on older phones like G1.

3. Quick Start Guide

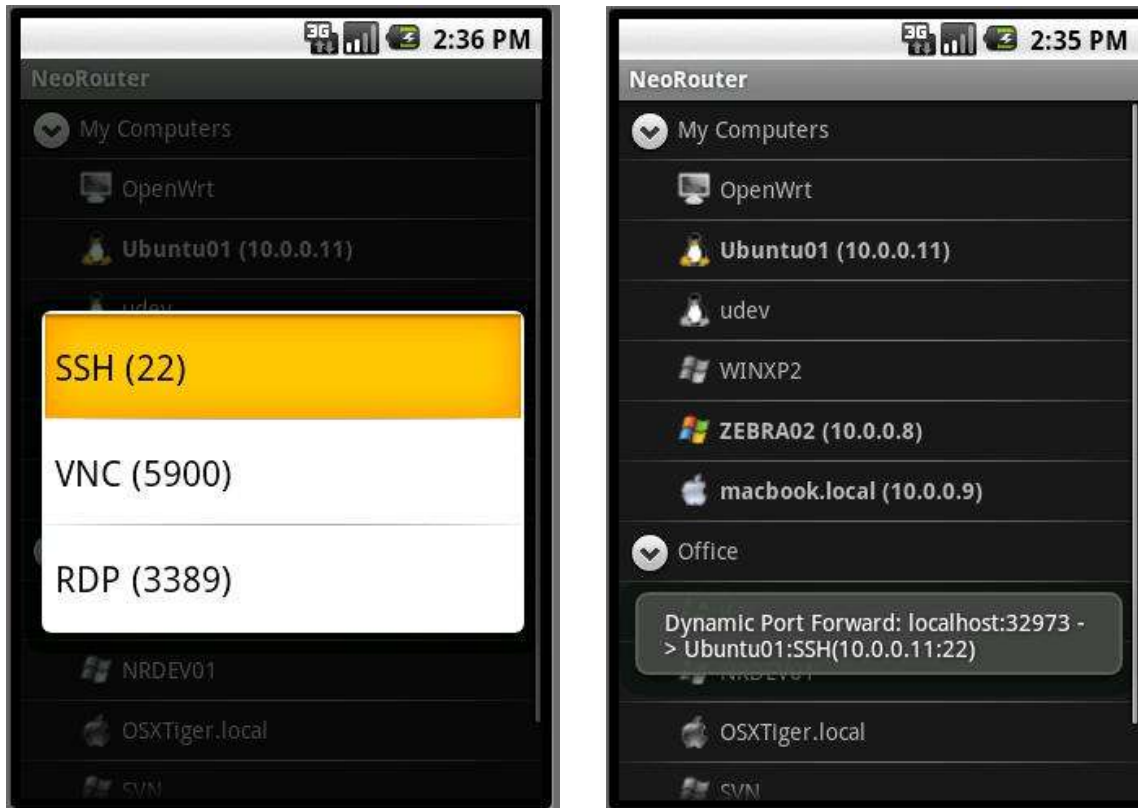
Using ConnectBot as example, I will show you how to setup NeoRouter for Android within minutes. This guide assumes that user had previously setup a NeoRouter Domain and added remote computers. Please read User's Manual for complete setup instructions.

Download and install NeoRouter from Android market.

Launch NeoRouter for Android and Sign In. The sign-in experience on Android is similar to that on Windows and Mac. Once you have signed in, you will see the list of remote computers in your network. If online, a computer is shown in bold with a color icon. It is also assigned a virtual IP address as shown inside the parenthesis.

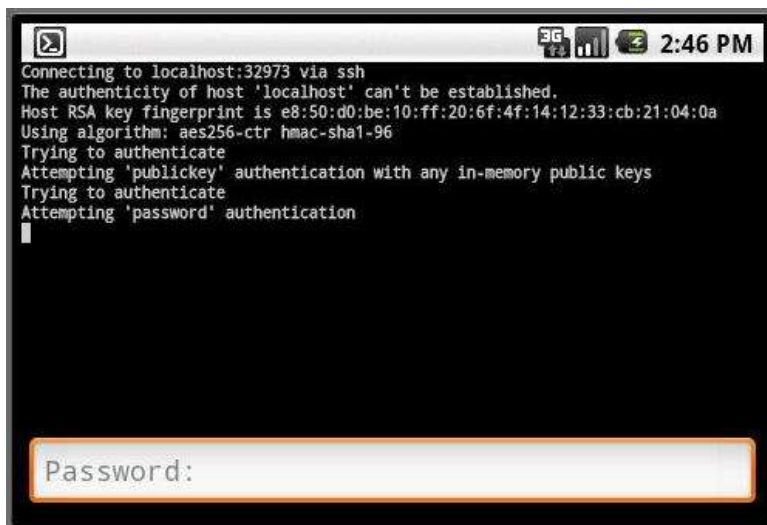
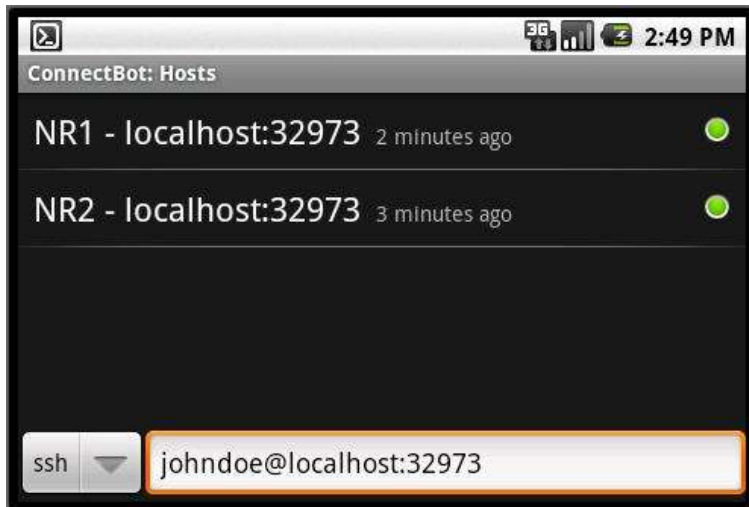


Long-click on an online computer and you will see the launch pad dialog with a list of applications/ports. Choose SSH (22) from the list and NeoRouter will setup port forward from localhost:32973 to the SSH port of the remote computer.



Launch ConnectBot, enter “user@localhost:32973”, and you will connect to the remote computer via SSH.

Tip: if you need multiple SSH connections concurrently, you can add multiple entries to localhost:32973 in ConnectBot by changing the Nick Name property. See ConnectBot’s FAQ for more information.



If you need to connect to a different computer or to use a different application, you can simply repeat the above steps to setup a different Dynamic Port Forward in NeoRouter. Then new connections to localhost:32973 will be forwarded to this new remote address. The change does not interrupt existing connections.

4. About Port Forward

Port Forward in NeoRouter shares the same basic concept as port tunneling using SSH. The NeoRouter Android application will listen at ports on localhost and forward connections to these ports to the remote computer over the virtual private network.

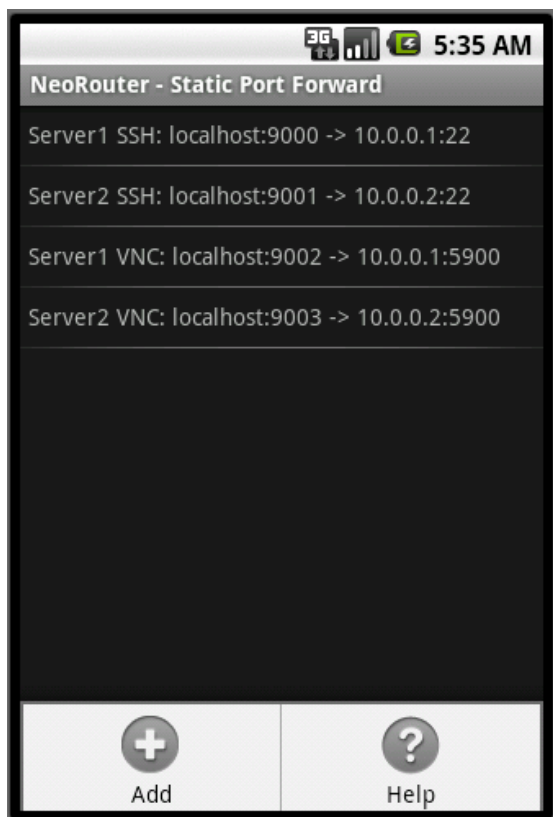
NeoRouter supports both Static Port Forward and Dynamic Port Forward.

1.1 Static Port Forward

With Static Port Forward, user assigns a local port for every remote [server:port]. For example, if a user needs access to two remote computers for SSH and VNC, he/she will need to create four static port forward mappings as shown in the screenshot below.

NeoRouter will listen at all these local ports and forward the incoming connections according to the mappings.

To edit static port forward, user needs to sign in, then click “menu” – “Settings” – “Configure Static Port Forward”.



1.2 Dynamic Port Forward

With Dynamic Port Forward, NeoRouter always listens at port 32973 of localhost, and user can specify remote computer and port dynamically by long-click a computer then choose a port (See Quick Start Guide for example). After setting remote computer and port, new connections to localhost:32973 will be forwarded to this remote address. User can change the remote address at any time without interrupting existing connections.

By default, NeoRouter supports three remote ports: SSH (22), VNC (5900) and RDP (3389). To change the default settings, user can sign in, click “menu” – “Settings” – “Configure Dynamic Port Forward”. Note that “\$NRIPAddress” will be replaced with the IP address of the remote computer.

